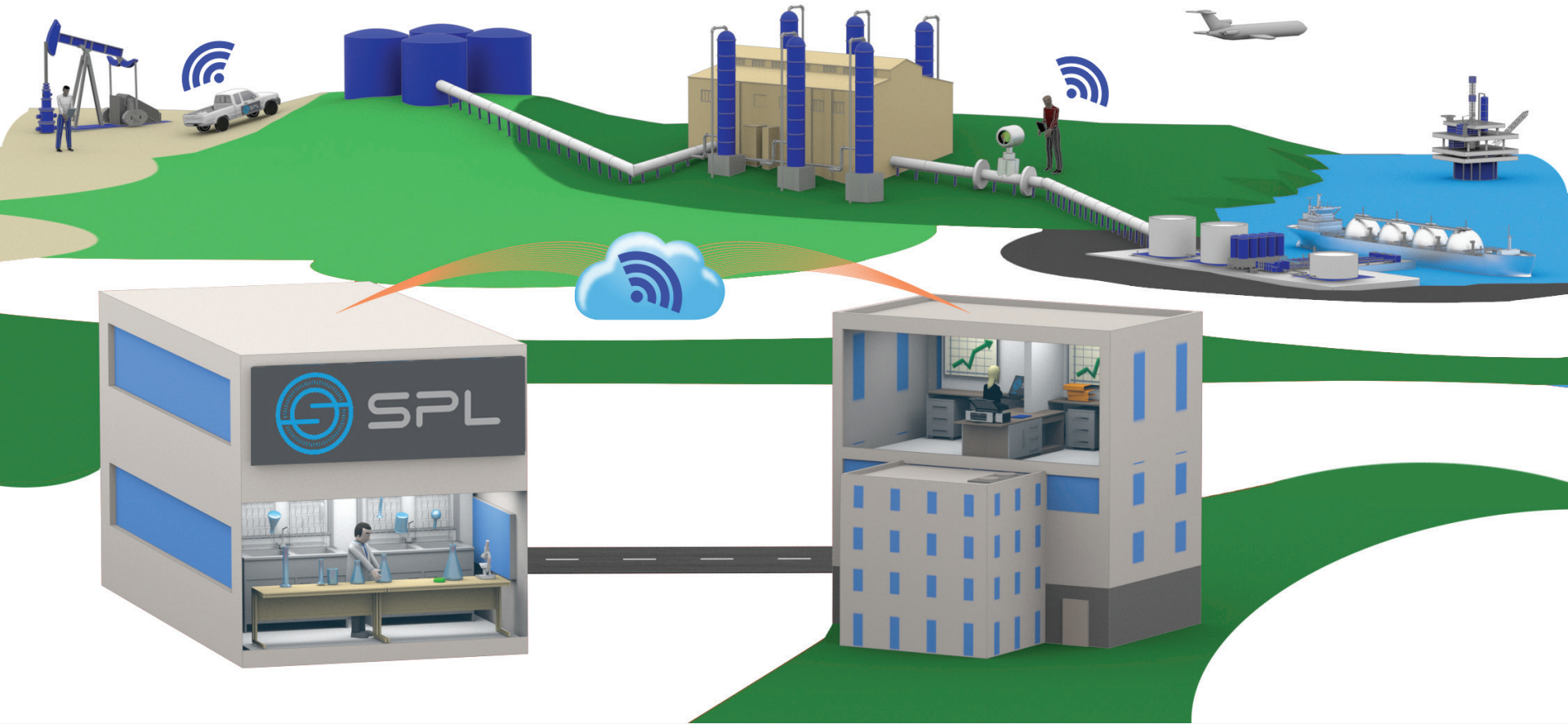
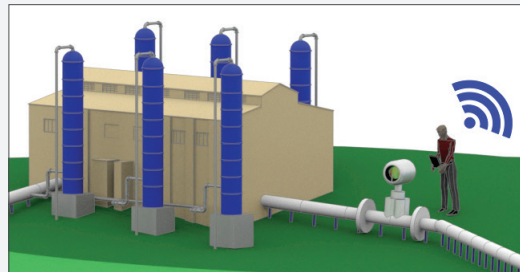


ACCURATE, DEFENSIBLE DATA THROUGHOUT THE ENERGY VALUE CHAIN



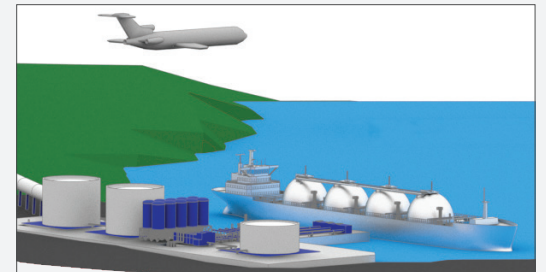
Production

SPL's services start at the first point of measurement. The SureVue™ mobile app provides real-time data access from any handheld device, so assets can be accurately and securely managed.



Midstream

Products entering and leaving your gathering system can be fully characterized, providing accurate and defensible analytical data that improves confidence in your accounting, allocations, marketing, and planning.



Finished Products

Full certification of liquid fuel, refined fuel, lubricant, and contaminated fuel analyses can be completed quickly, ensuring compliance with industry standards and government regulations, and saving revenue.



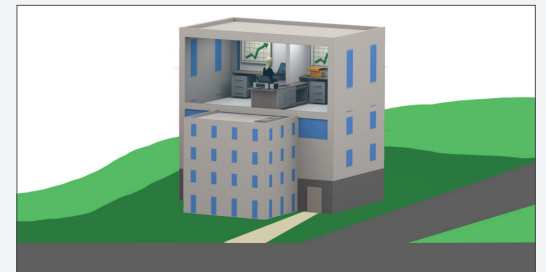
SPL Infrastructure

SPL's strategically located labs, 200+ field technicians, and 90+ chemical analysts help meet your testing, inspection, and certification scheduling, operational, and compliance obligations.



Digital Solutions

SPL's cloud-based, SOC-compliant software platform provides your data where you need it, when you need it, while keeping it secure and confidential.



Customer-Centric

Whether SPL performs your complex allocations, or you utilize our proprietary SurePhase™ software in-house, you know that your reporting is accurate and allocations are equitable.